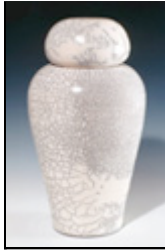


**Raku** is a firing technique that originated in 16<sup>th</sup> century Japan for the Tea Ceremony. Raku ware is decorative and functional. **Raku pottery** is fired to about 1800 degrees



Fahrenheit, so that it is able to absorb the smoke created when the pieces are taken hot from the kiln with tongs, and placed in a container with leaves, straw and ferns. When the lid is placed on the container, the flames die down and carbon is driven into the bare clay, sometimes leaving impressions of ferns and creating wonderful patterns in the crackle glazes. **Raku vases** are fine for cut flowers. It is best to place a smaller glass or plastic container inside the Raku vase to hold the water and flowers. **To clean Raku**, rinse under running water, gently blot dry with a lint free cloth and allow to air dry.

**Lynn Dee** holds an art degree with intensification in ceramics from San Jose State University, where she studied with James Lovera and Herbert Sanders.



In 1974 she attended a Raku workshop taught by Paul Soldner, who is credited with introducing Raku to American potters.

Lynn Dee has taught ceramics, including Raku from 1982 to the present. In the 1970's she produced her own line of hand thrown stoneware pottery.

*"Every Raku firing is exciting, and continues to stimulate my imagination. There is no limit to the possibilities."*

\_\_\_\_ LYNN DEE

[www.lynndeestudios.com](http://www.lynndeestudios.com)

PO Box 88, Lummi Is, WA 98262

Phone: 360-758-2815